

TOWNSHIP OF ASHFIELD-COLBORNE-WAWANOSH

SCHEDULE 'A'

ASHFIELD
WARD

WAWANOSH
WARD

COLBORNE
WARD



Corporation of the
COUNTY of HURON
PLANNING AND DEVELOPMENT DEPARTMENT
Credit House, Goderich, Ontario N7A 1M2

Produced by the County of Huron Planning and Development
Department GIS Services with Data supplied under Licence by
Members of the Ontario Geospatial Data Exchange and MVCA.
This map is illustrative only. Do not rely on it as a precise
Indicator of routes, feature locations, nor as a guide to navigation.
Copyright © Queen's Printer 2003.
June 2003.



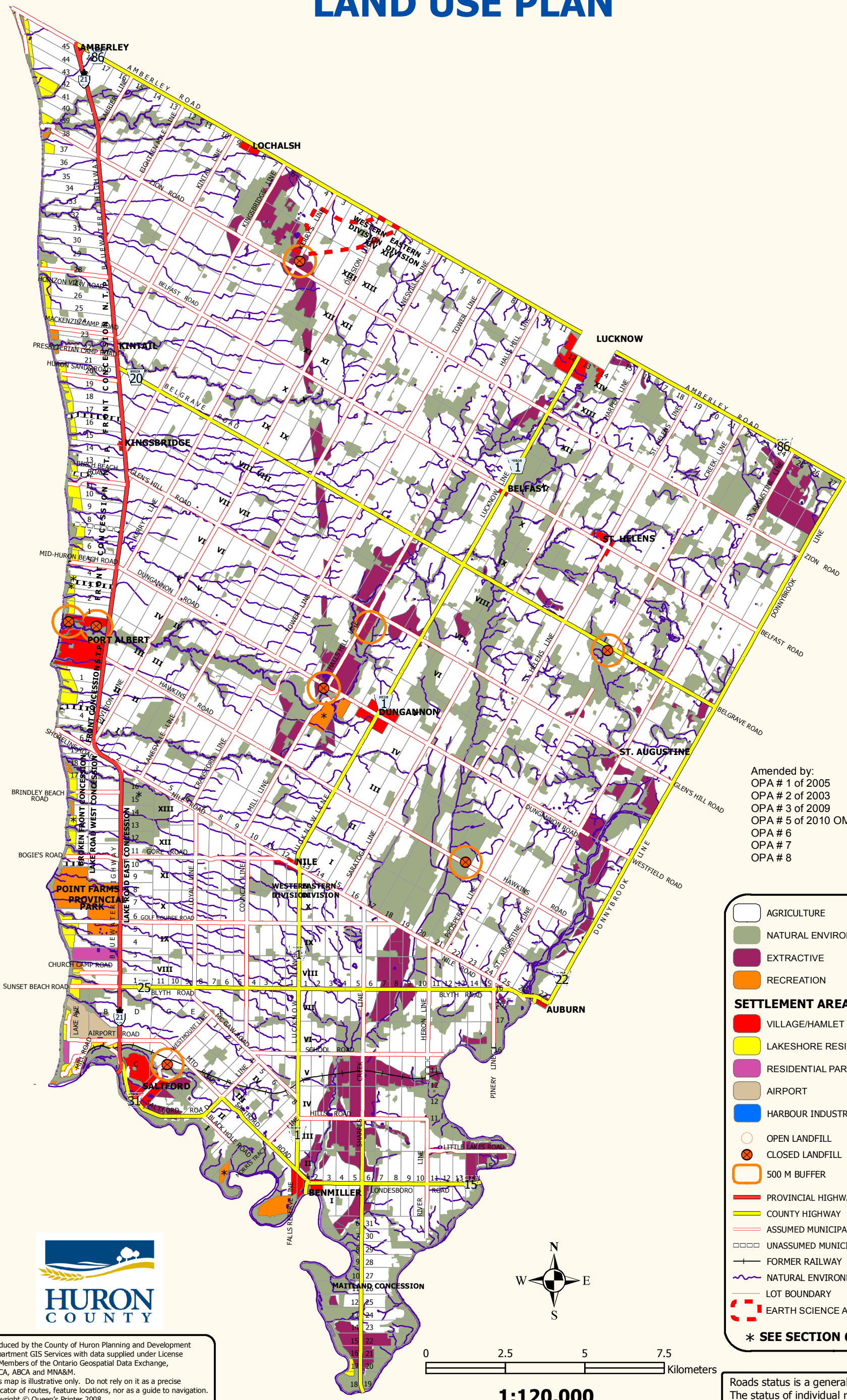
1:198,770

ASHFIELD-COLBORNE-WAWANOSH

OFFICIAL PLAN

SCHEDULE 'B'

LAND USE PLAN



Amended by:
OPA # 1 of 2005
OPA # 2 of 2003
OPA # 3 of 2009
OPA # 5 of 2010 OMB No. PL101197
OPA # 6
OPA # 7
OPA # 8

- AGRICULTURE
 - NATURAL ENVIRONMENT
 - EXTRACTIVE
 - RECREATION
 - SETTLEMENT AREAS**
 - VILLAGE/HAMLET
 - LAKESHORE RESIDENTIAL
 - RESIDENTIAL PARK
 - AIRPORT
 - HARBOUR INDUSTRIAL
 - OPEN LANDFILL
 - CLOSED LANDFILL
 - 500 M BUFFER
 - PROVINCIAL HIGHWAY
 - COUNTY HIGHWAY
 - ASSUMED MUNICIPAL ROAD
 - UNASSUMED MUNICIPAL ROAD
 - FORMER RAILWAY
 - NATURAL ENVIRONMENT (RIVER, CREEK)
 - LOT BOUNDARY
 - EARTH SCIENCE ANSI
- * SEE SECTION 6.4.11**



Produced by the County of Huron Planning and Development
Department GIS Services with data supplied under License
by Members of the Ontario Geospatial Data Exchange,
MVCA, ABCA and MNA&M.
This map is illustrative only. Do not rely on it as a precise
indicator of routes, feature locations, nor as a guide to navigation.
Copyright © Queen's Printer 2008.
May 2008.

0 2.5 5 7.5
Kilometers

1:120,000

Roads status is a general indication only.
The status of individual roads must be
verified by the municipality.

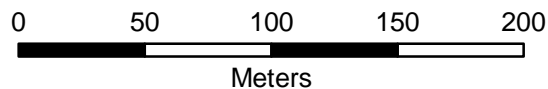
SCHEDULE 'C' ROADS PLAN



Produced by the County of Huron Planning and Development
Department GIS Services with Data supplied under Licence
by Members of the Ontario Geospatial Data Exchange and MVCA.
This map is illustrative only. Do not rely on it as a precise
indicator of routes, feature locations, nor as a guide to navigation.
Copyright (c) Queen's Printer 2003.
September 2003.

Roads status is a general indication only.
The status of individual roads must be
verified by the municipality.

**TOWNSHIP OF ASHFIELD - COLBORNE - WAWANOSH
SCHEDULE "D"
OFFICIAL PLAN
AMBERLEY**

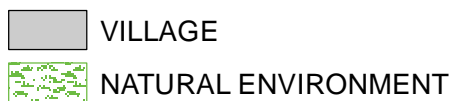
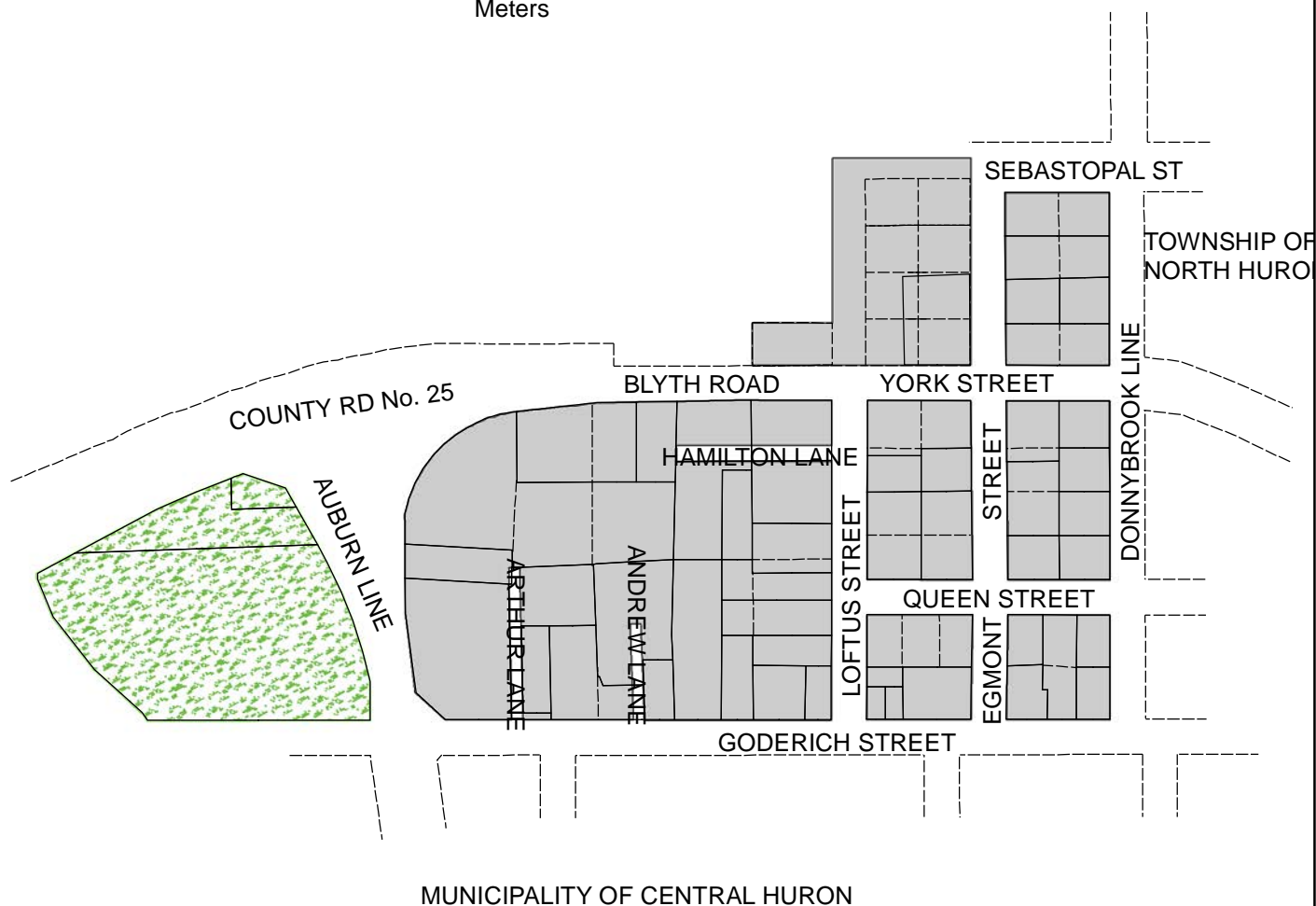
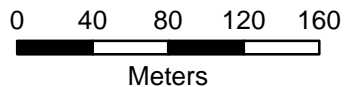


TOWNSHIP OF ASHFIELD - COLBORNE - WAWANOSH

SCHEDULE "E"

OFFICIAL PLAN

AUBURN



TOWNSHIP OF ASHFIELD - COLBORNE - WAWANOSH

SCHEDULE "F"

OFFICIAL PLAN

BELFAST



ANN STREET

Ashfield Ward

Wawanosh Ward

LUCKNOW LINE

BELFAST ROAD

ALTON STREET

ALTON STREET

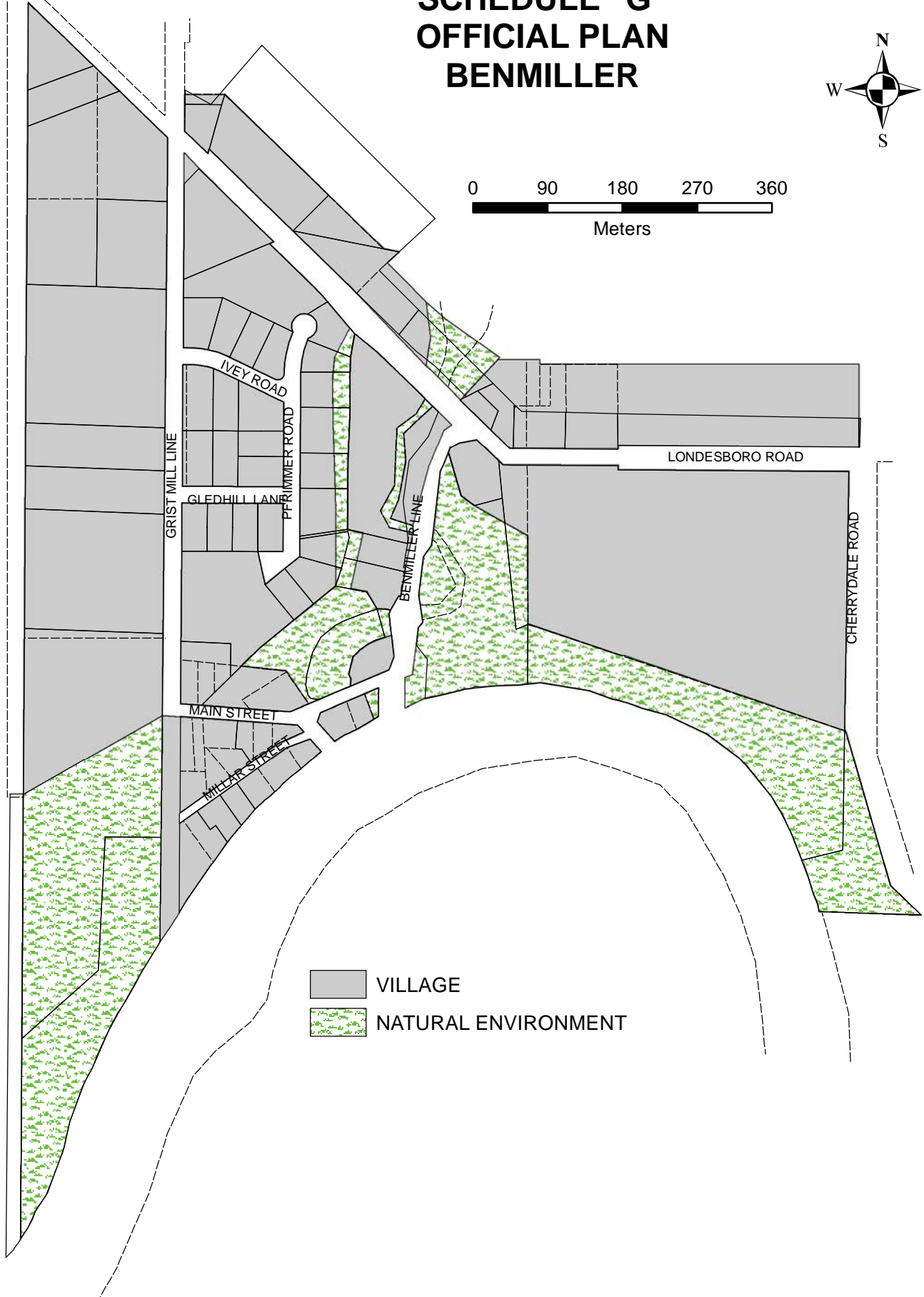
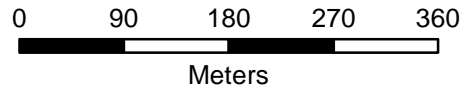
 HAMLET

TOWNSHIP OF ASHFIELD - COLBORNE - WAWANOSH

SCHEDULE "G"

OFFICIAL PLAN

BENMILLER



- VILLAGE
- NATURAL ENVIRONMENT

TOWNSHIP OF ASHFIELD - COLBORNE - WAWANOSH

SCHEDULE "H"

OFFICIAL PLAN

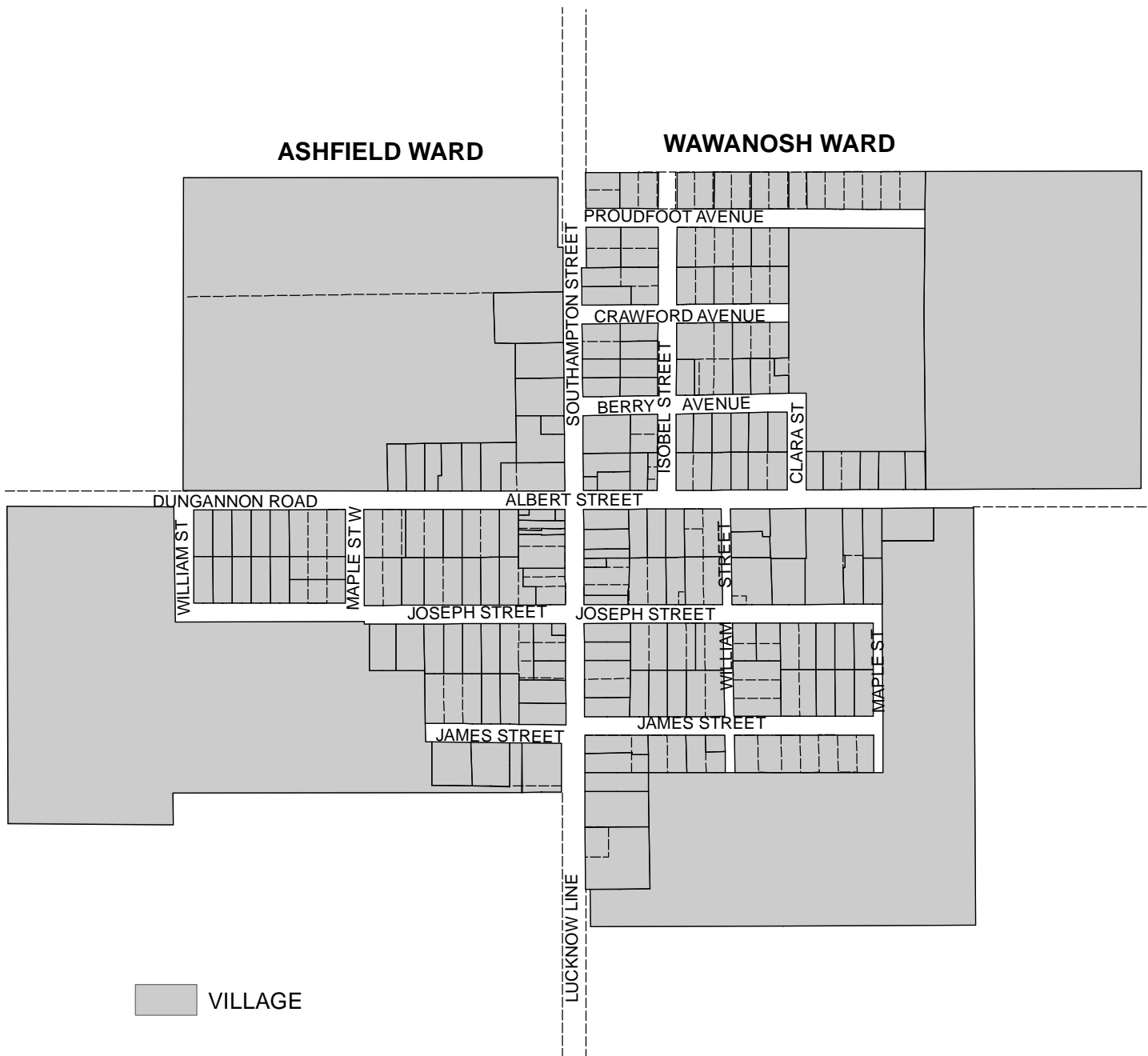
DUNGANNON

0 190 380 Meters



ASHFIELD WARD

WAWANOSH WARD



**TOWNSHIP OF ASHFIELD - COLBORNE - WAWANOSH
SCHEDULE "I"
OFFICIAL PLAN
LOCHALSH**



**HURON - KINLOSS
BRUCE COUNTY**

AMBERLEY ROAD

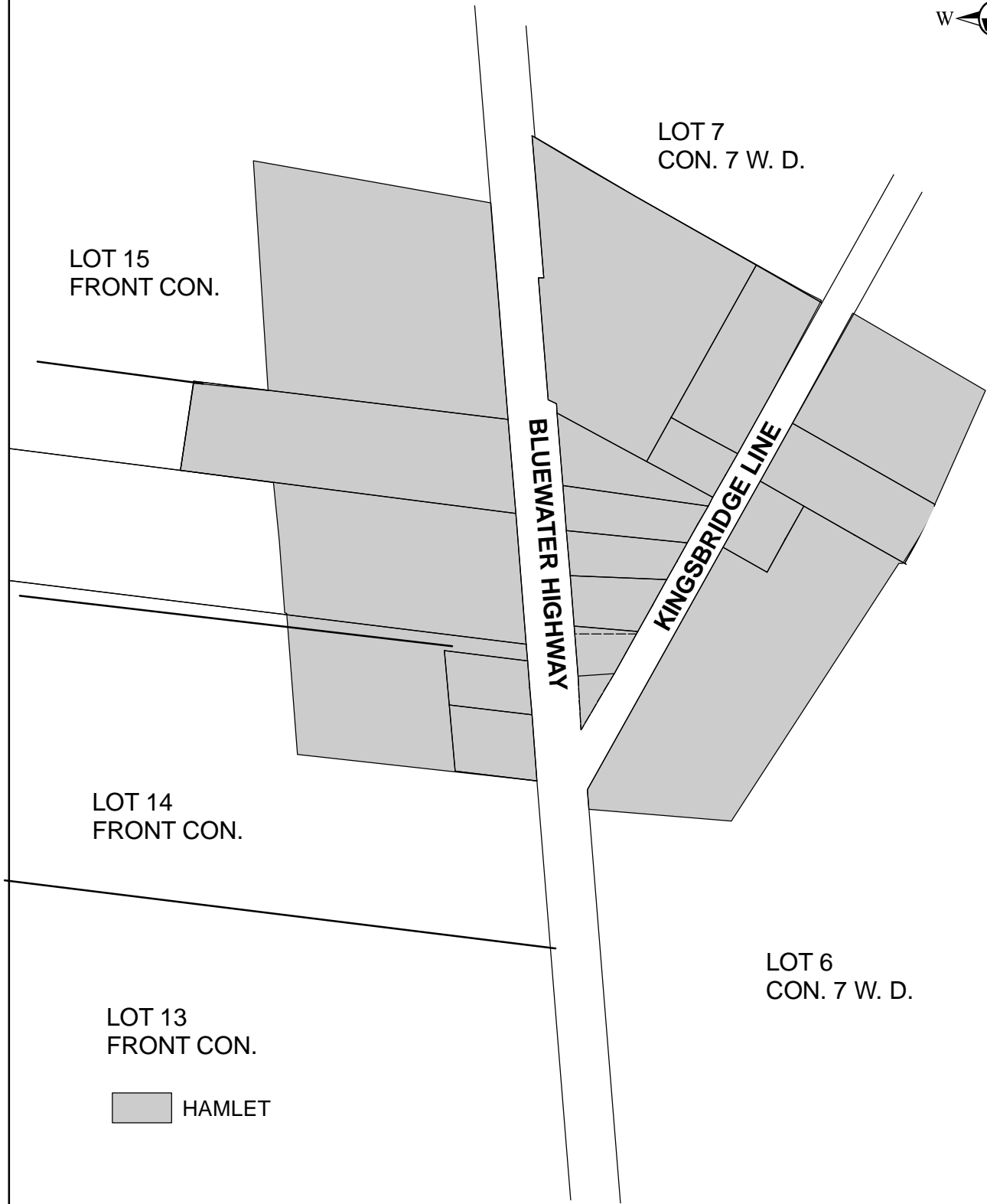
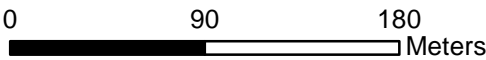
KINTAIL LINE

**LOT 9
CON. 14 W. D.**

**LOT 8
CON. 14 W. D.**

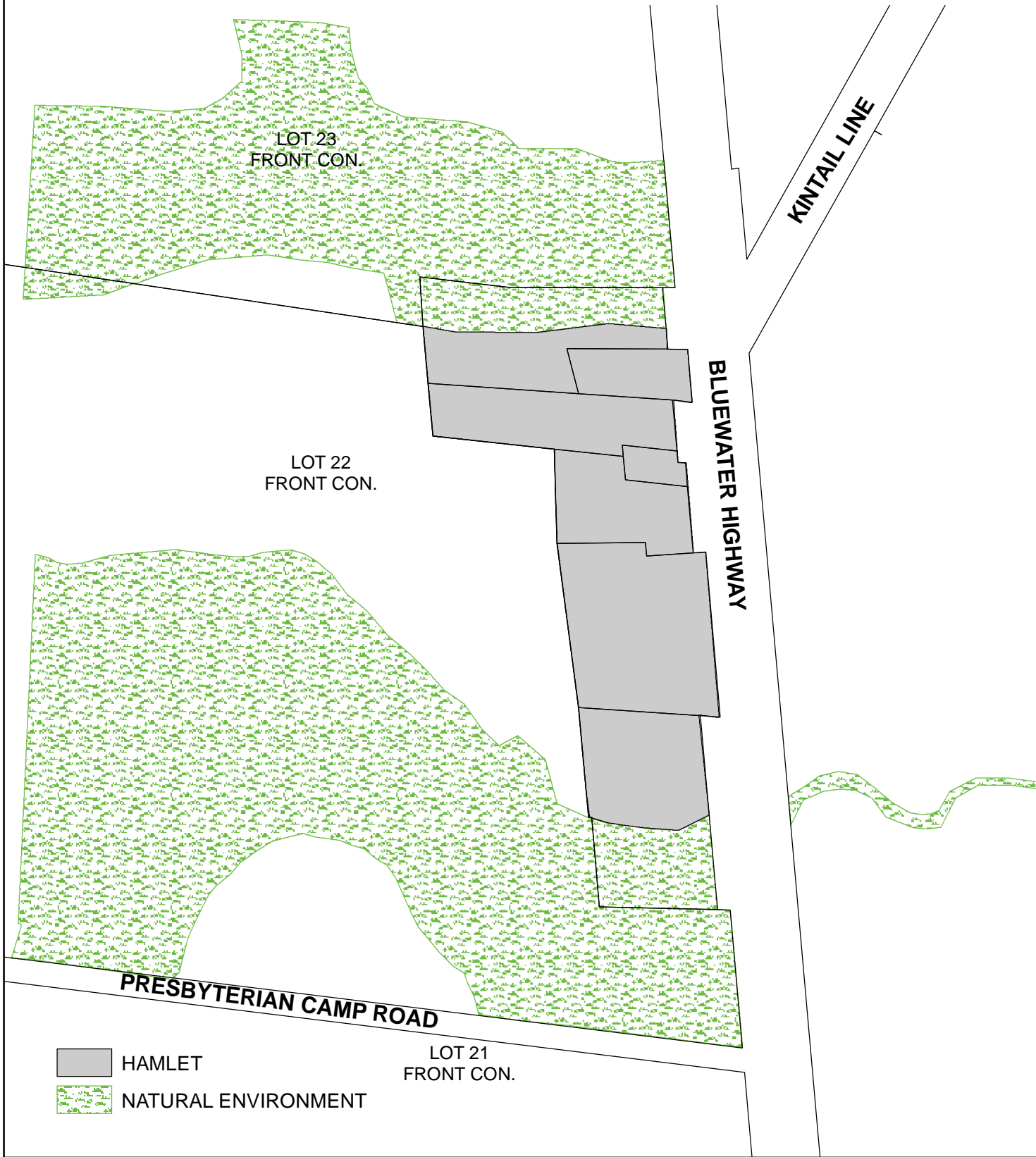
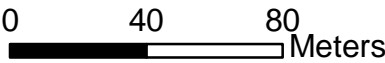
 **HAMLET**

**TOWNSHIP OF ASHFIELD - COLBORNE - WAWANOSH
SCHEDULE "J"
OFFICIAL PLAN
KINGSBRIDGE**



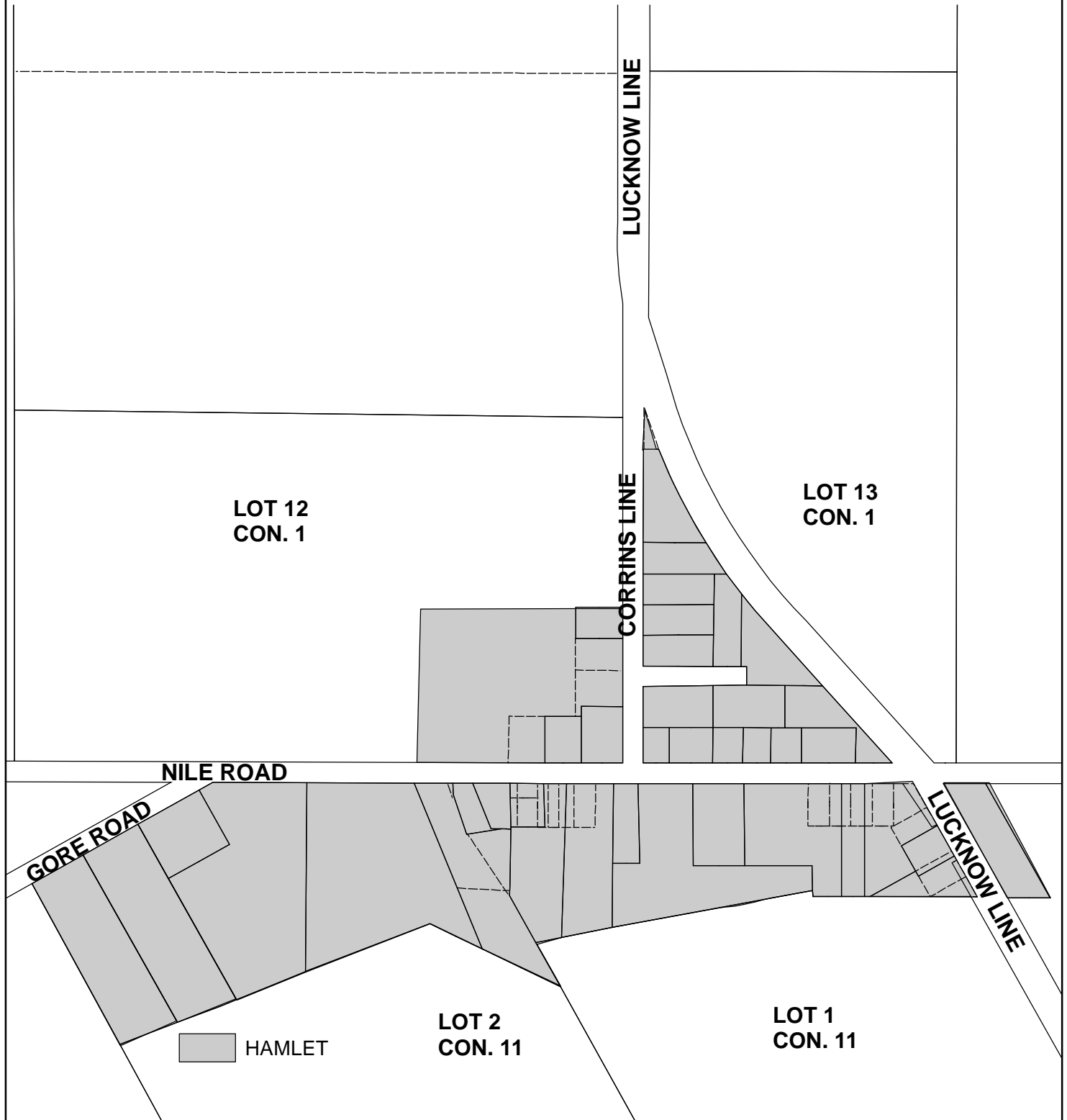
 HAMLET

**TOWNSHIP OF ASHFIELD - COLBORNE - WAWANOSH
SCHEDULE "K"
OFFICIAL PLAN
KINTAIL**



TOWNSHIP OF ASHFIELD - COLBORNE - WAWANOSH
SCHEDULE "L"
OFFICIAL PLAN
NILE

0 90 180 270
Meters



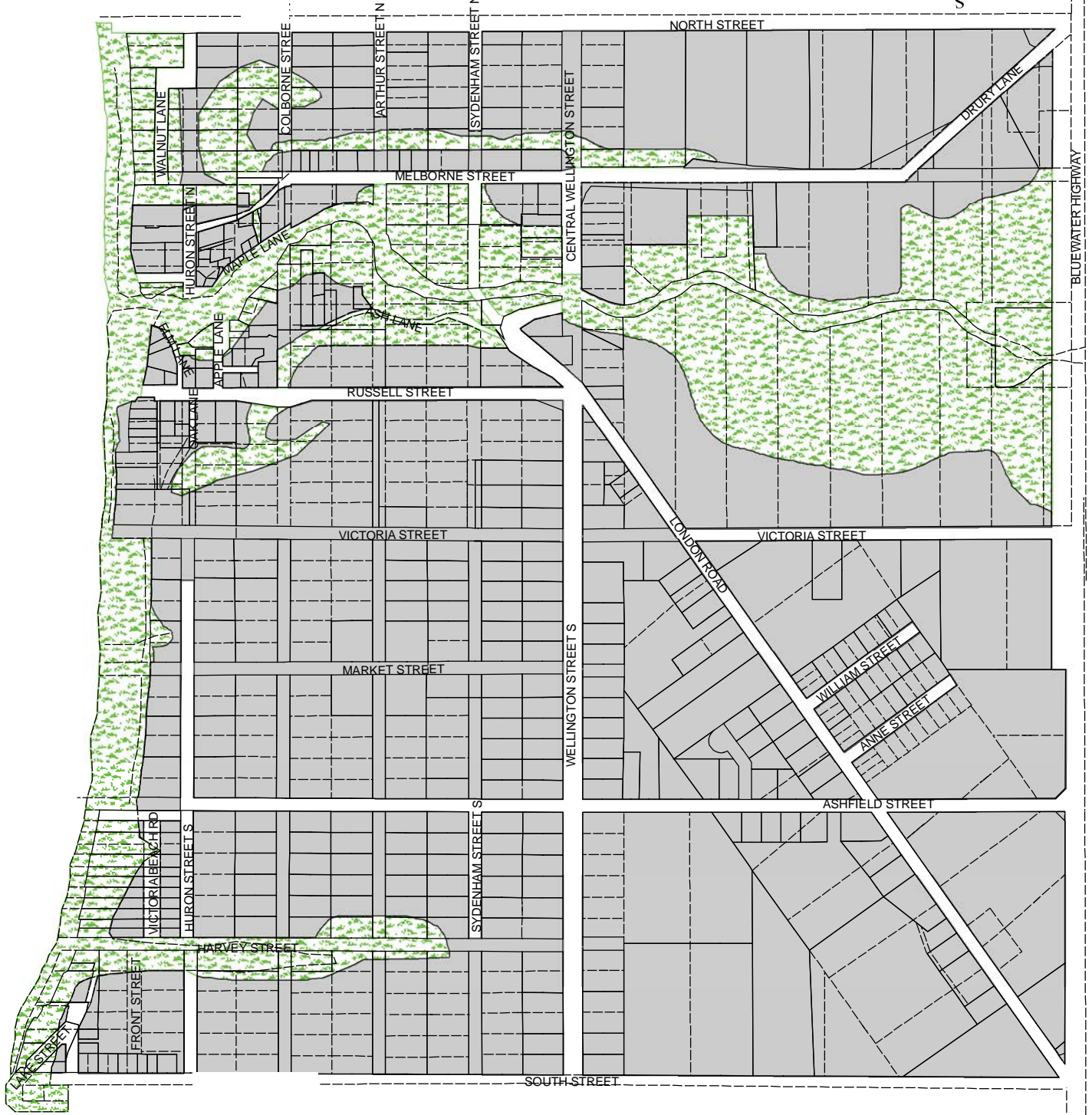
TOWNSHIP OF ASHFIELD - COLBORNE - WAWANOSH

SCHEDULE "M"

OFFICIAL PLAN

PORT ALBERT

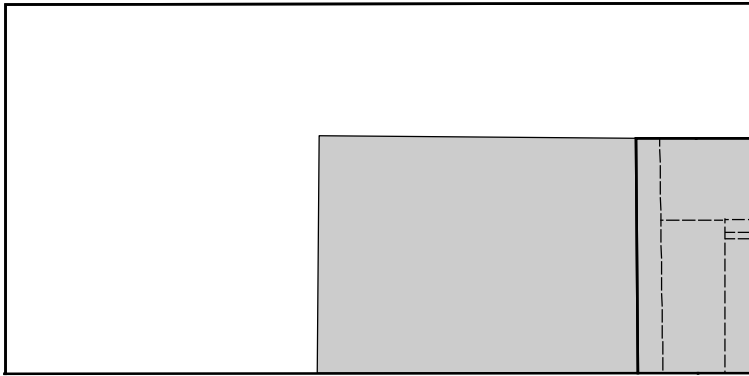
0 190 380 570 Meters



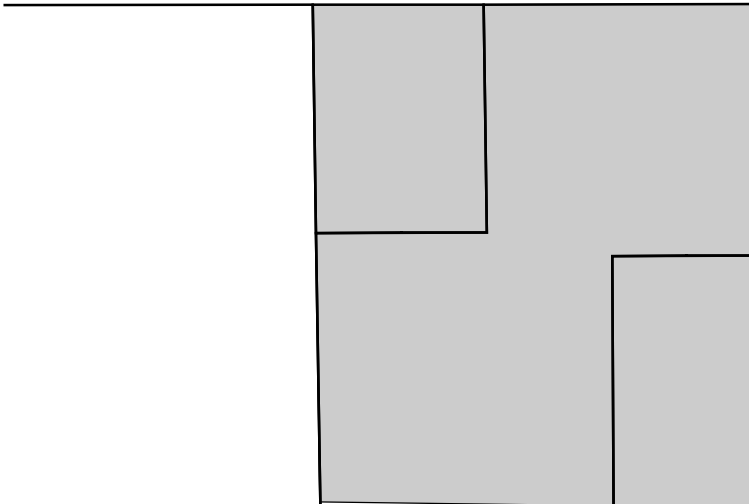
- VILLAGE
- NATURAL ENVIRONMENT

**TOWNSHIP OF ASHFIELD - COLBORNE - WAWANOSH
SCHEDULE "N"
OFFICIAL PLAN
ST. AUGUSTINE**

0 40 80 Meters



GLEN'S HILL ROAD



ST. AUGUSTINE LINE

 **HAMLET**

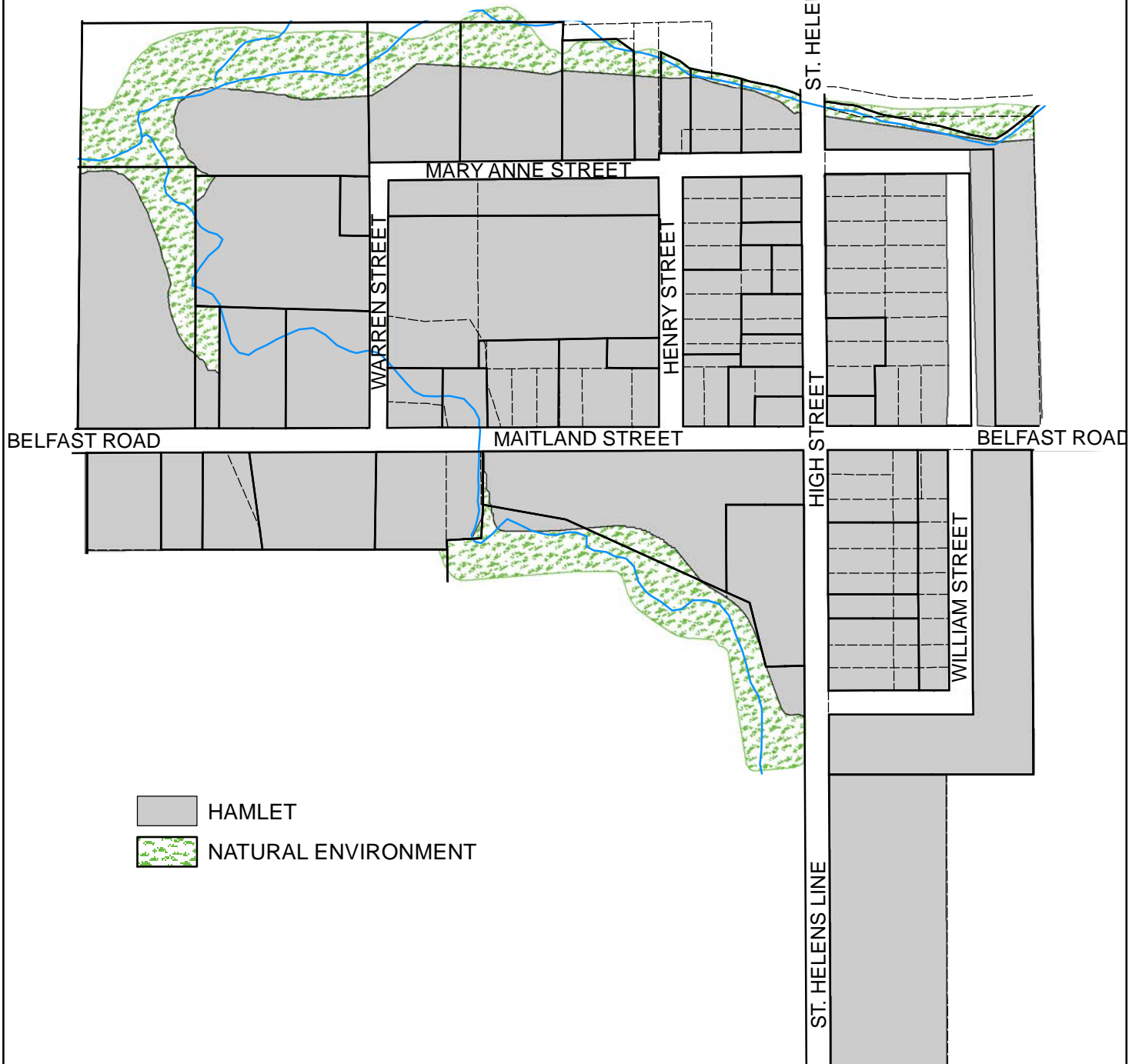
TOWNSHIP OF ASHFIELD - COLBORNE - WAWANOSH



SCHEDULE "O"

OFFICIAL PLAN

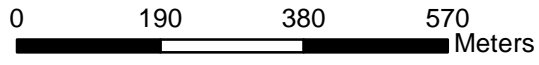
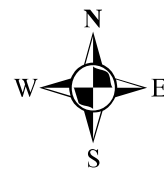
ST. HELENS



0 90 180 270 Meters



-  HAMLET
-  NATURAL ENVIRONMENT

TOWNSHIP OF ASHFIELD - COLBORNE - WAWANOSH
SCHEDULE "P"
OFFICIAL PLAN
SALTFORD



-  VILLAGE
-  NATURAL ENVIRONMENT



TOWNSHIP OF ASHFIELD - COLBORNE - WAWANOSH

SCHEDULE "Q"

OFFICIAL PLAN

SOUTH OF LUCKNOW

0 190 380 570 Meters

Bruce County
Huron - Kinloss



AMBERLEY ROAD

Village of
Lucknow

CON. 14

CON. 13

Lot 13
Con. 14

Lot 14
Con. 14

Line Between Con. 13 - 14

LUCKNOW LINE



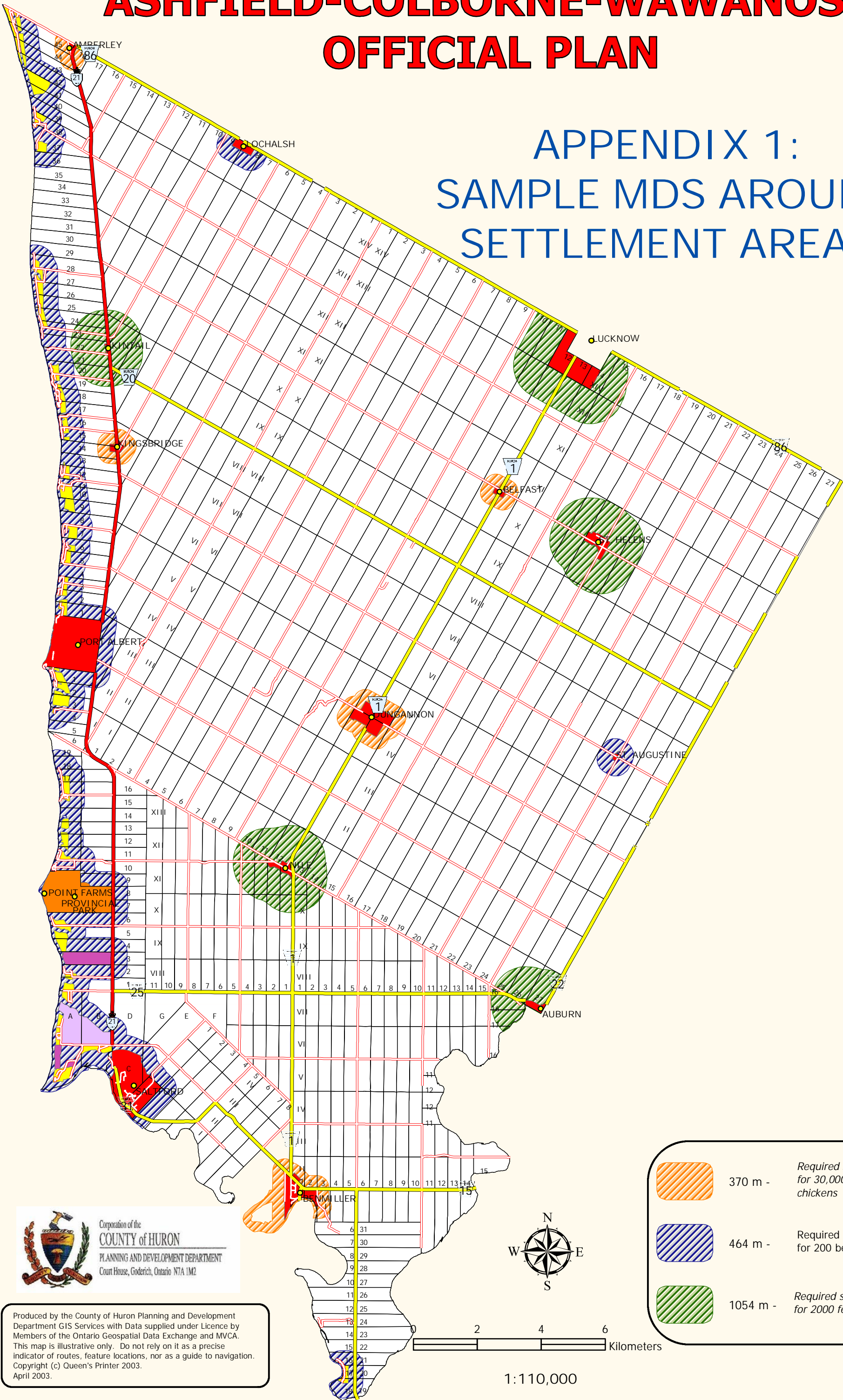
VILLAGE



NATURAL ENVIRONMENT

ASHFIELD-COLBORNE-WAWANOSH OFFICIAL PLAN

APPENDIX 1: SAMPLE MDS AROUND SETTLEMENT AREAS

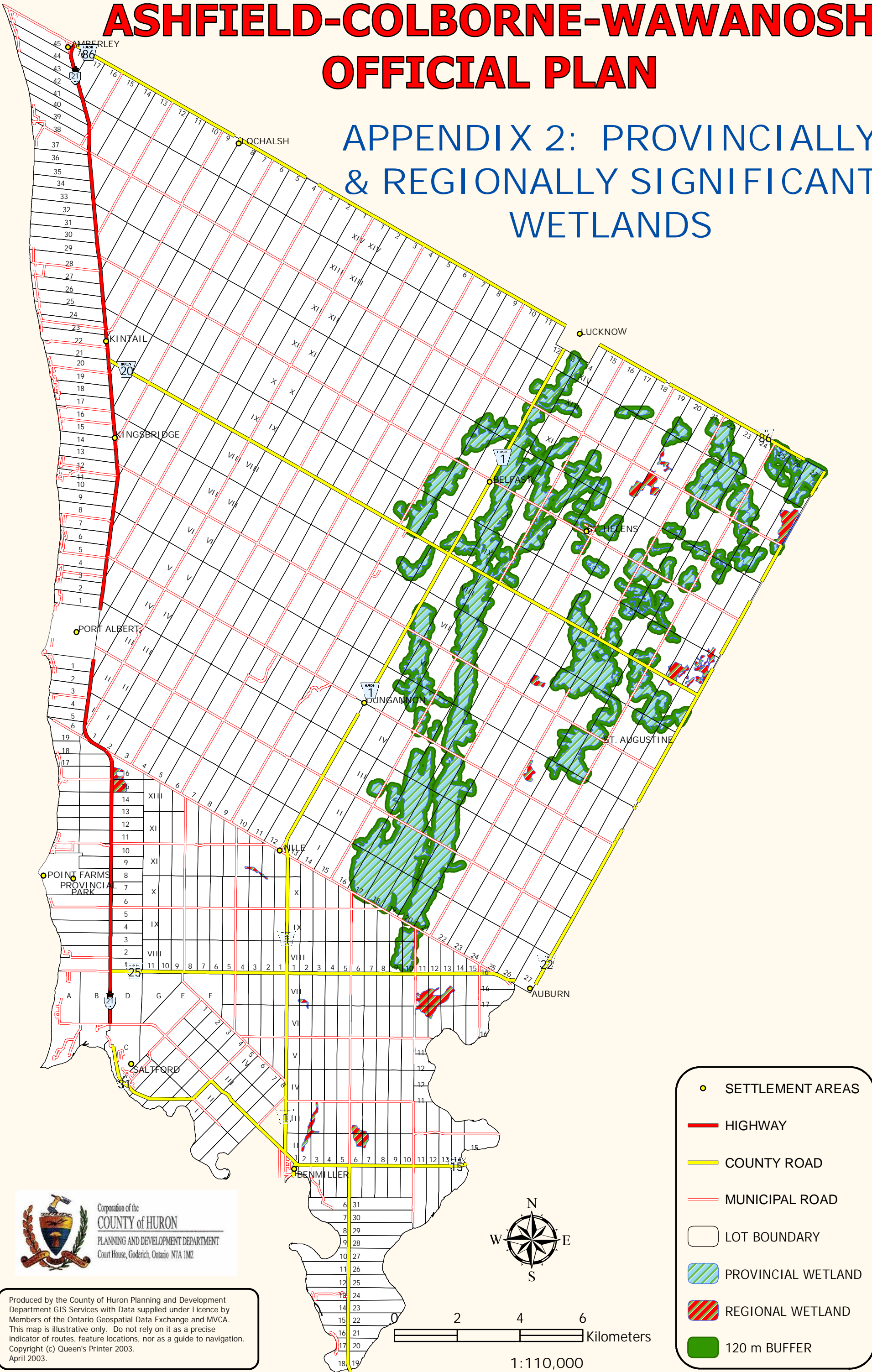


Corporation of the
COUNTY OF HURON
PLANNING AND DEVELOPMENT DEPARTMENT
Court House, Goderich, Ontario N7A 1M2

Produced by the County of Huron Planning and Development Department GIS Services with Data supplied under Licence by Members of the Ontario Geospatial Data Exchange and MVCA. This map is illustrative only. Do not rely on it as a precise indicator of routes, feature locations, nor as a guide to navigation. Copyright (c) Queen's Printer 2003. April 2003.

ASHFIELD-COLBORNE-WAWANOSH OFFICIAL PLAN

APPENDIX 2: PROVINCIAL & REGIONALLY SIGNIFICANT WETLANDS

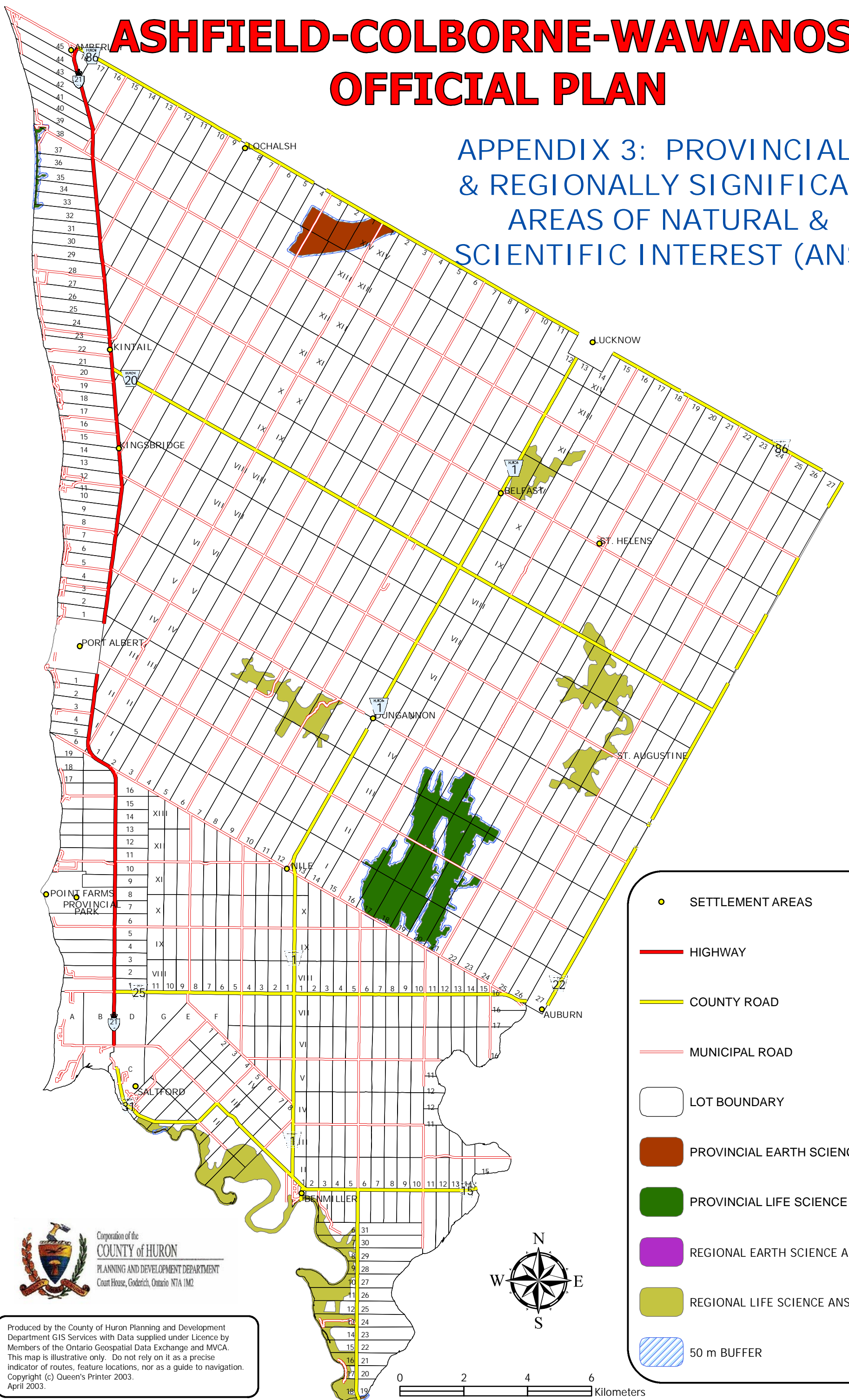


Corporation of the
COUNTY of HURON
PLANNING AND DEVELOPMENT DEPARTMENT
Court House, Goderich, Ontario N7A 1M2

Produced by the County of Huron Planning and Development Department GIS Services with Data supplied under Licence by Members of the Ontario Geospatial Data Exchange and MVCA. This map is illustrative only. Do not rely on it as a precise indicator of routes, feature locations, nor as a guide to navigation. Copyright (c) Queen's Printer 2003. April 2003.

ASHFIELD-COLBORNE-WAWANOSH OFFICIAL PLAN

APPENDIX 3: PROVINCIAL & REGIONALLY SIGNIFICANT AREAS OF NATURAL & SCIENTIFIC INTEREST (ANSI)

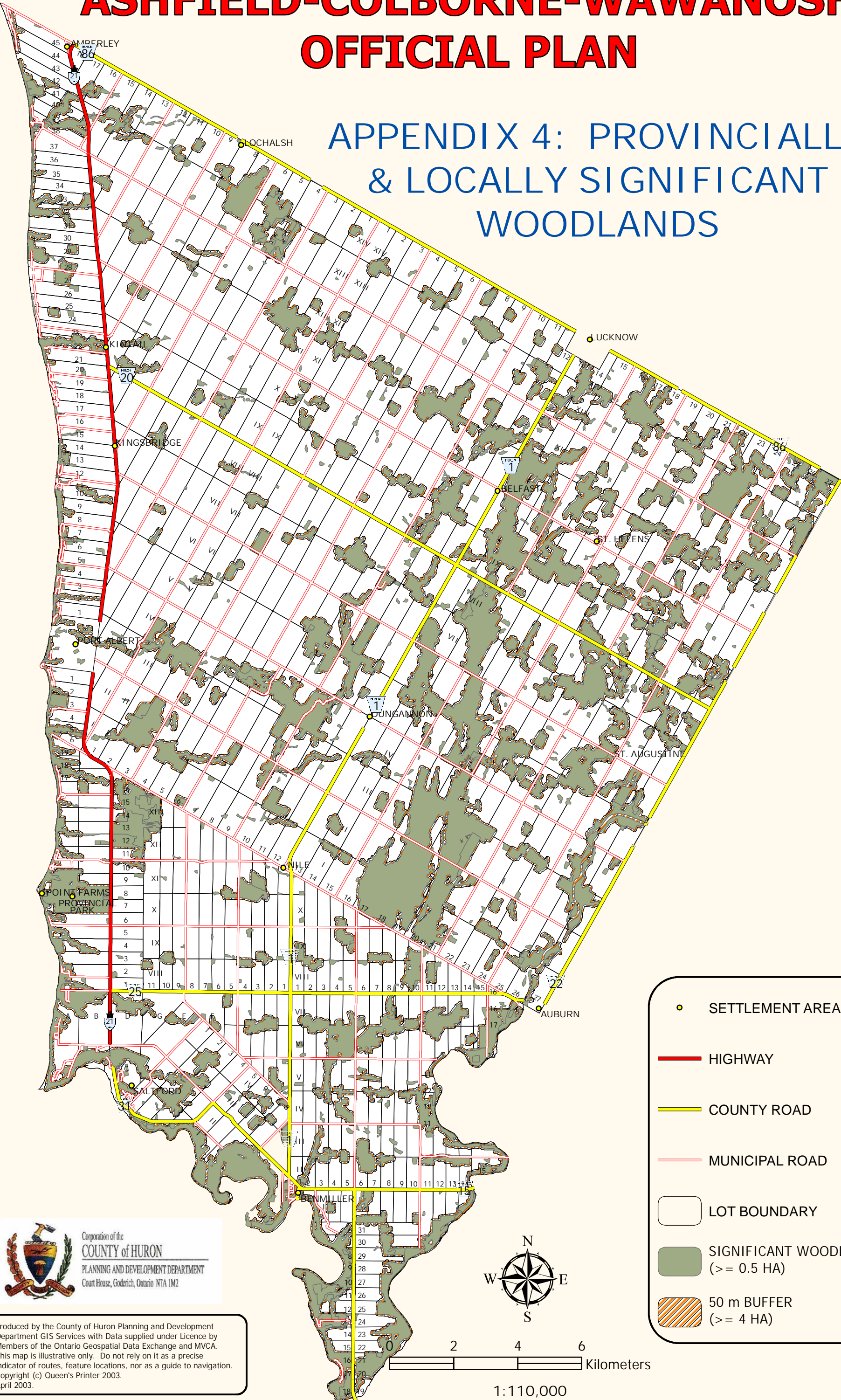


Corporation of the
COUNTY of HURON
PLANNING AND DEVELOPMENT DEPARTMENT
Court House, Goderich, Ontario N7A 1M2

Produced by the County of Huron Planning and Development Department GIS Services with Data supplied under Licence by Members of the Ontario Geospatial Data Exchange and MVCA. This map is illustrative only. Do not rely on it as a precise indicator of routes, feature locations, nor as a guide to navigation. Copyright (c) Queen's Printer 2003. April 2003.

ASHFIELD-COLBORNE-WAWANOSH OFFICIAL PLAN

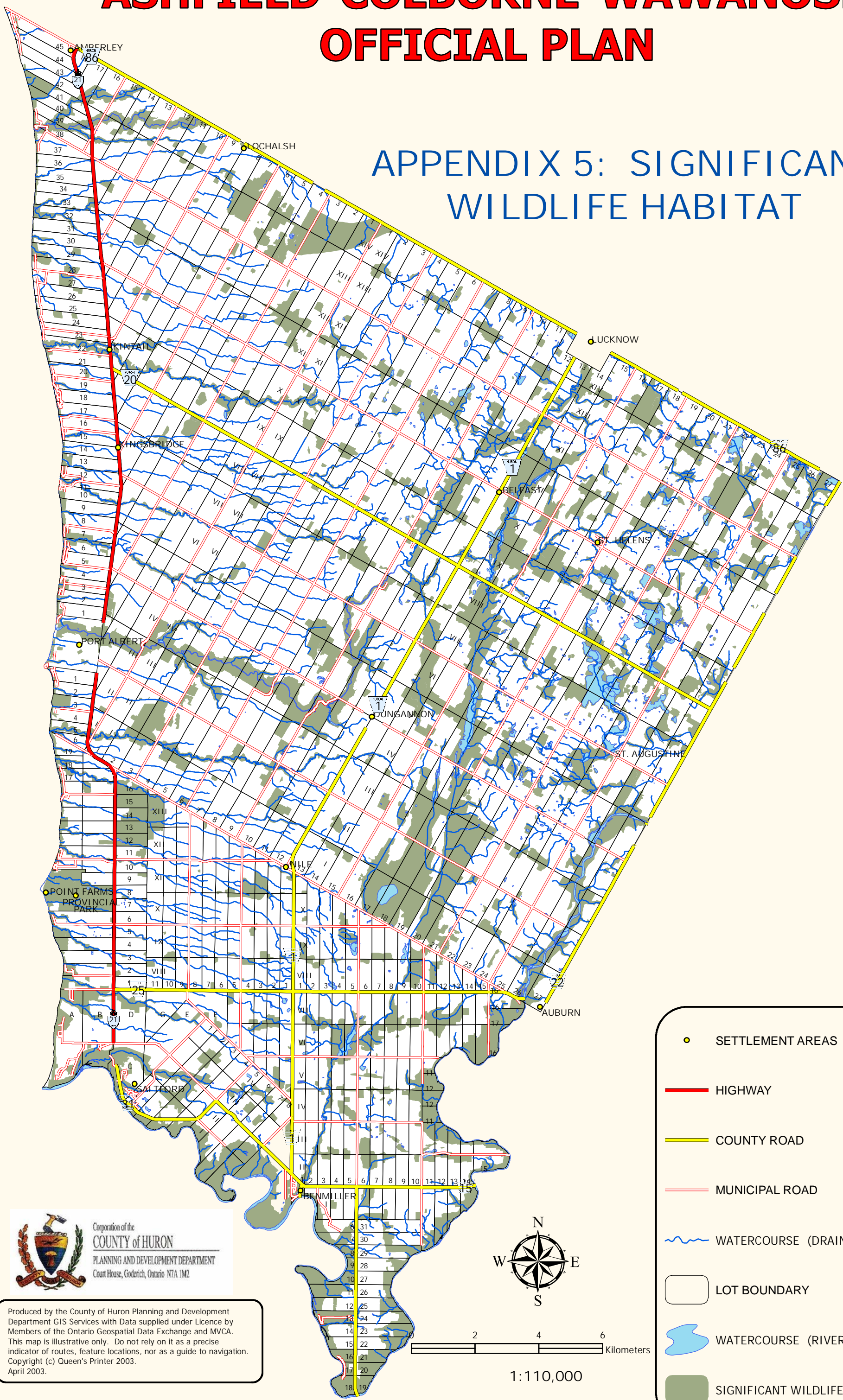
APPENDIX 4: PROVINCIAL & LOCALLY SIGNIFICANT WOODLANDS



Produced by the County of Huron Planning and Development Department GIS Services with Data supplied under Licence by Members of the Ontario Geospatial Data Exchange and MVCA. This map is illustrative only. Do not rely on it as a precise indicator of routes, feature locations, nor as a guide to navigation. Copyright (c) Queen's Printer 2003. April 2003.

ASHFIELD-COLBORNE-WAWANOSH OFFICIAL PLAN

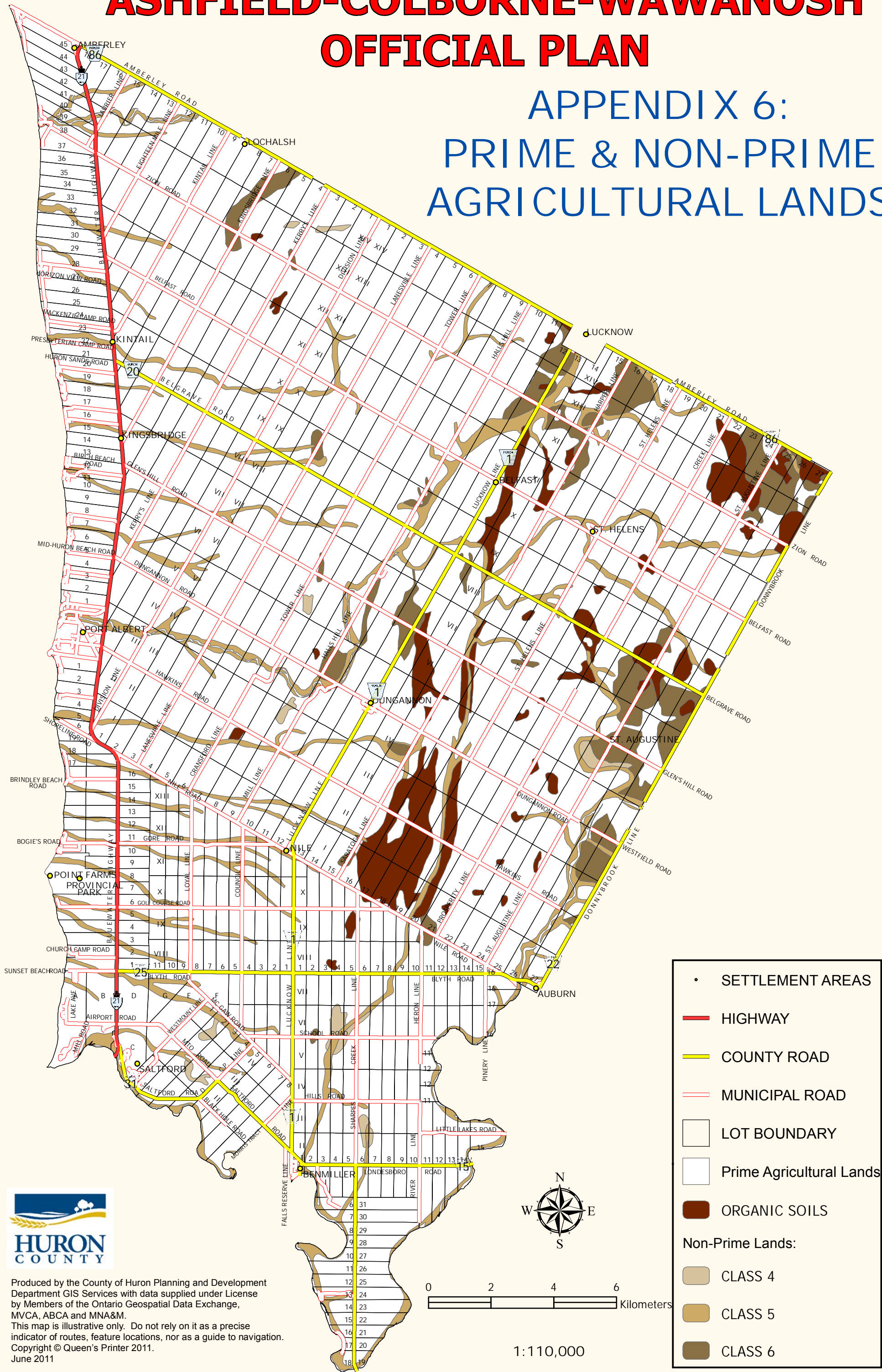
APPENDIX 5: SIGNIFICANT WILDLIFE HABITAT



Produced by the County of Huron Planning and Development Department GIS Services with Data supplied under Licence by Members of the Ontario Geospatial Data Exchange and MVCA. This map is illustrative only. Do not rely on it as a precise indicator of routes, feature locations, nor as a guide to navigation. Copyright (c) Queen's Printer 2003. April 2003.

ASHFIELD-COLBORNE-WAWANOSH OFFICIAL PLAN

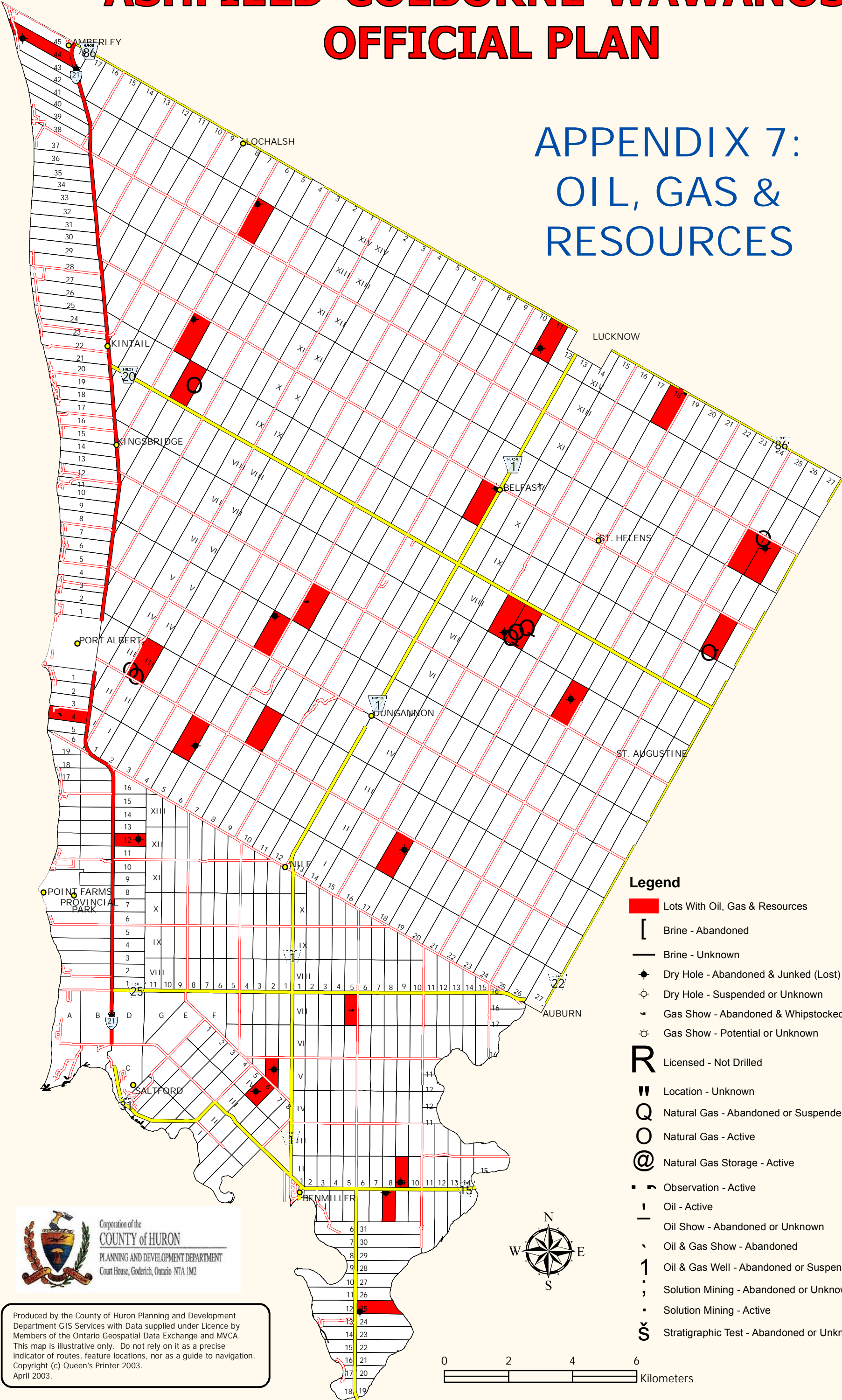
APPENDIX 6: PRIME & NON-PRIME AGRICULTURAL LANDS



Produced by the County of Huron Planning and Development Department GIS Services with data supplied under License by Members of the Ontario Geospatial Data Exchange, MVCA, ABCA and MNA&M. This map is illustrative only. Do not rely on it as a precise indicator of routes, feature locations, nor as a guide to navigation. Copyright © Queen's Printer 2011. June 2011

ASHFIELD-COLBORNE-WAWANOSH OFFICIAL PLAN

APPENDIX 7: OIL, GAS & RESOURCES



Corporation of the
COUNTY OF HURON
PLANNING AND DEVELOPMENT DEPARTMENT
Court House, Goderich, Ontario N7A 1M2

Produced by the County of Huron Planning and Development
Department GIS Services with Data supplied under Licence by
Members of the Ontario Geospatial Data Exchange and MVCA.
This map is illustrative only. Do not rely on it as a precise
indicator of routes, feature locations, nor as a guide to navigation.
Copyright (c) Queen's Printer 2003.
April 2003.

ASHFIELD-COLBORNE-WAWANOSH OFFICIAL PLAN

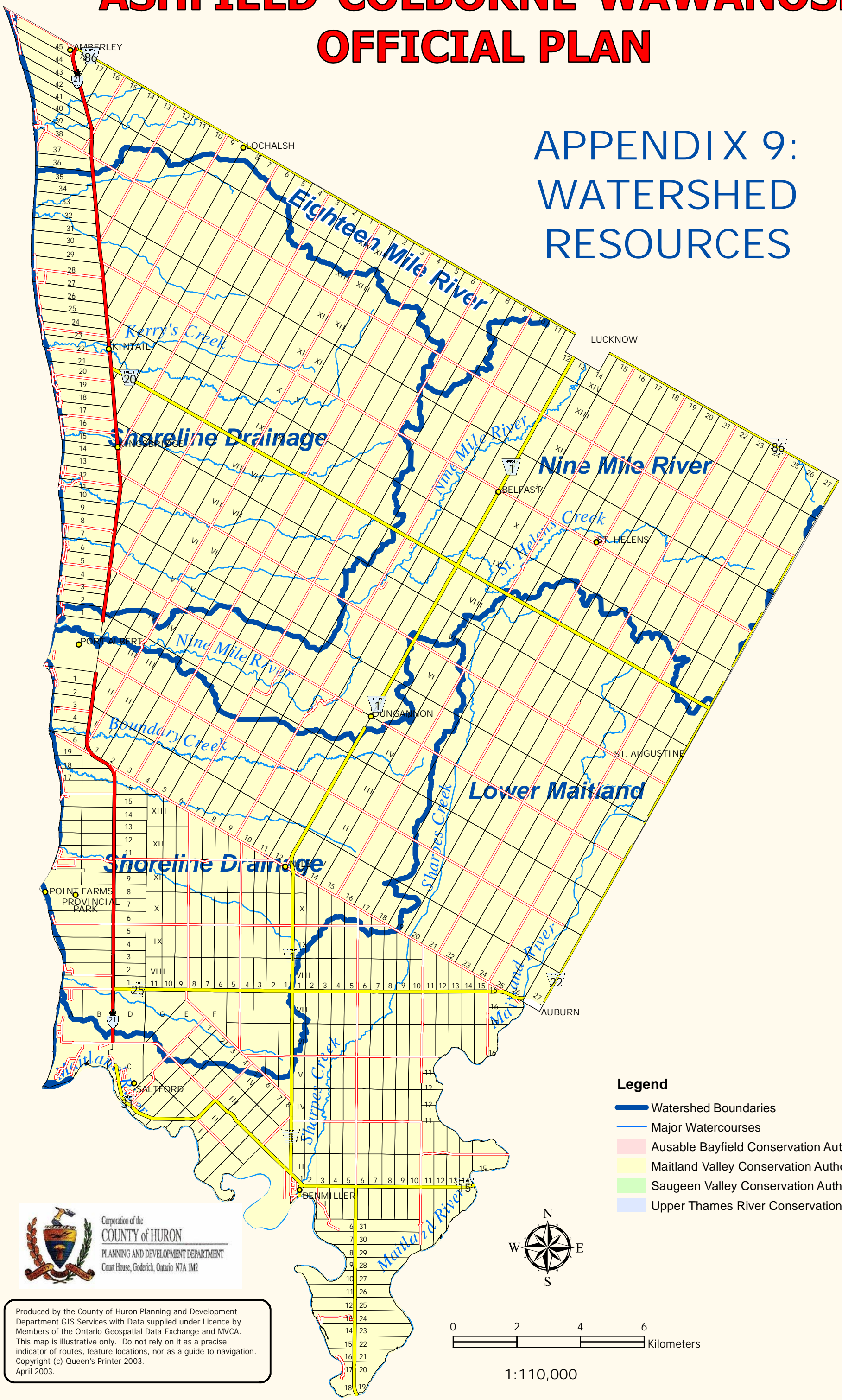
APPENDIX 8: KNOWN AGGREGATE DEPOSITS



Produced by the County of Huron Planning and Development Department GIS Services with Data supplied under Licence by Members of the Ontario Geospatial Data Exchange and MVCA. This map is illustrative only. Do not rely on it as a precise indicator of routes, feature locations, nor as a guide to navigation. Copyright (c) Queen's Printer 2003. April 2003.

ASHFIELD-COLBORNE-WAWANOSH OFFICIAL PLAN

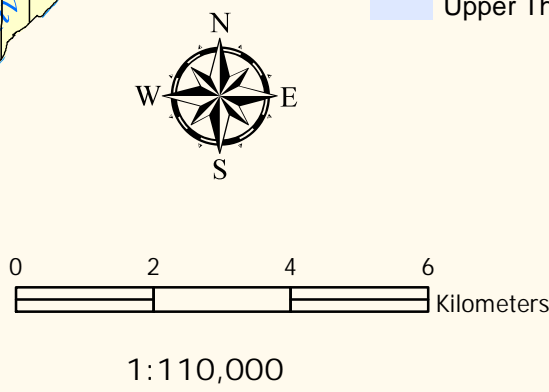
APPENDIX 9: WATERSHED RESOURCES



- Legend**
- Watershed Boundaries
 - Major Watercourses
 - Ausable Bayfield Conservation Authority
 - Maitland Valley Conservation Authority
 - Saugeen Valley Conservation Authority
 - Upper Thames River Conservation Authority

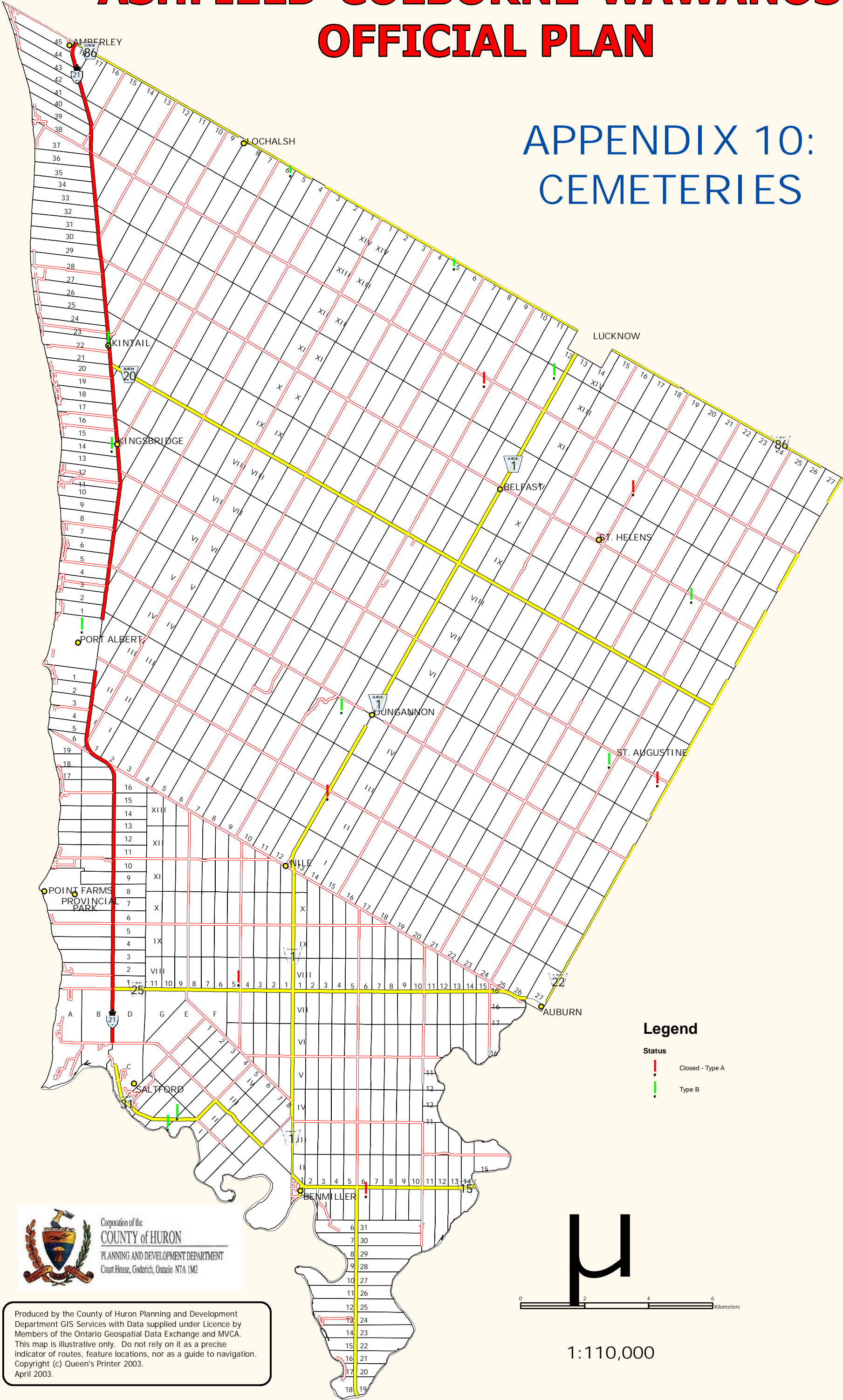


Produced by the County of Huron Planning and Development Department GIS Services with Data supplied under Licence by Members of the Ontario Geospatial Data Exchange and MVCA. This map is illustrative only. Do not rely on it as a precise indicator of routes, feature locations, nor as a guide to navigation. Copyright (c) Queen's Printer 2003. April 2003.



ASHFIELD-COLBORNE-WAWANOSH OFFICIAL PLAN

APPENDIX 10: CEMETERIES



Produced by the County of Huron Planning and Development Department GIS Services with Data supplied under Licence by Members of the Ontario Geospatial Data Exchange and MVCA. This map is illustrative only. Do not rely on it as a precise indicator of routes, feature locations, nor as a guide to navigation. Copyright (c) Queen's Printer 2003. April 2003.

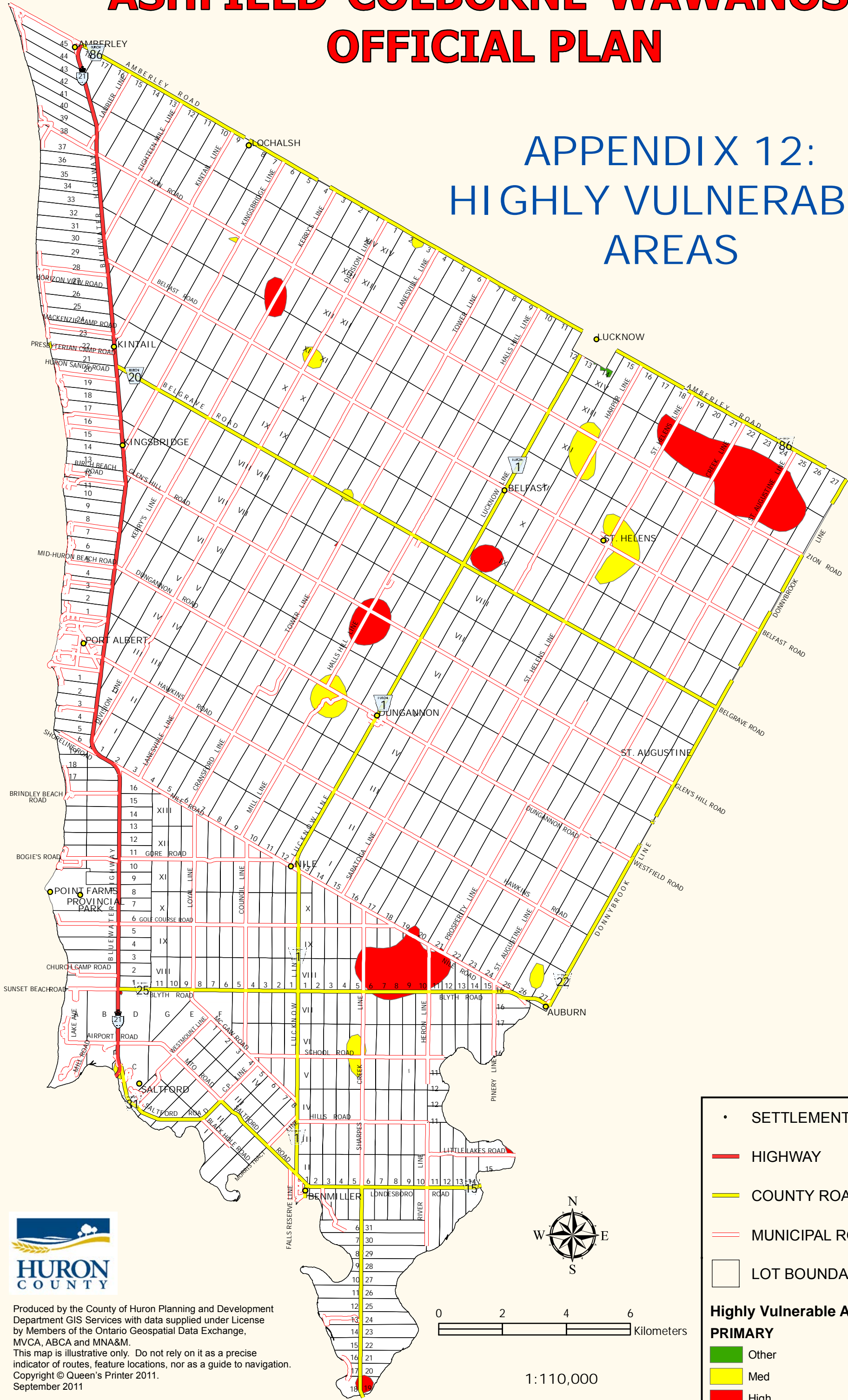
APPENDIX 11: WELL-HEAD PROTECTION AREAS



Produced by the County of Huron Planning and Development
Department GIS Services with data supplied under License
by Members of the Ontario Geospatial Data Exchange,
MVCA, ABCA and MNA&M.
This map is illustrative only. Do not rely on it as a precise
indicator of routes, feature locations, nor as a guide to navigation.
Copyright © Queen's Printer 2011.
September 2011

ASHFIELD-COLBORNE-WAWANOSH OFFICIAL PLAN

APPENDIX 12: HIGHLY VULNERABLE AREAS



Produced by the County of Huron Planning and Development Department GIS Services with data supplied under License by Members of the Ontario Geospatial Data Exchange, MVCA, ABCA and MNA&M. This map is illustrative only. Do not rely on it as a precise indicator of routes, feature locations, nor as a guide to navigation. Copyright © Queen's Printer 2011. September 2011

• SETTLEMENT AREAS

HIGHWAY

COUNTY ROAD

MUNICIPAL ROAD

LOT BOUNDARY

Highly Vulnerable Areas

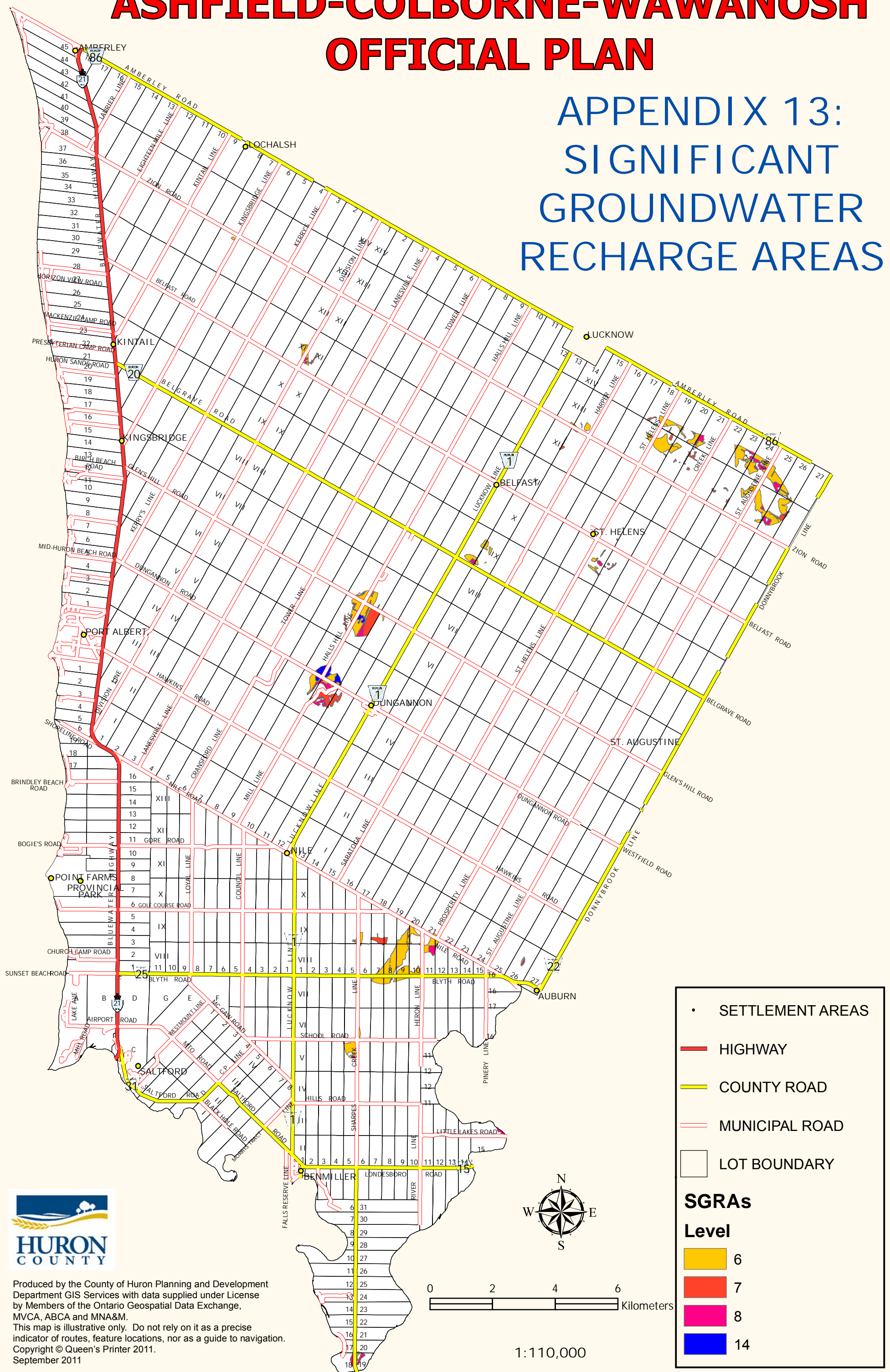
PRIMARY

Other

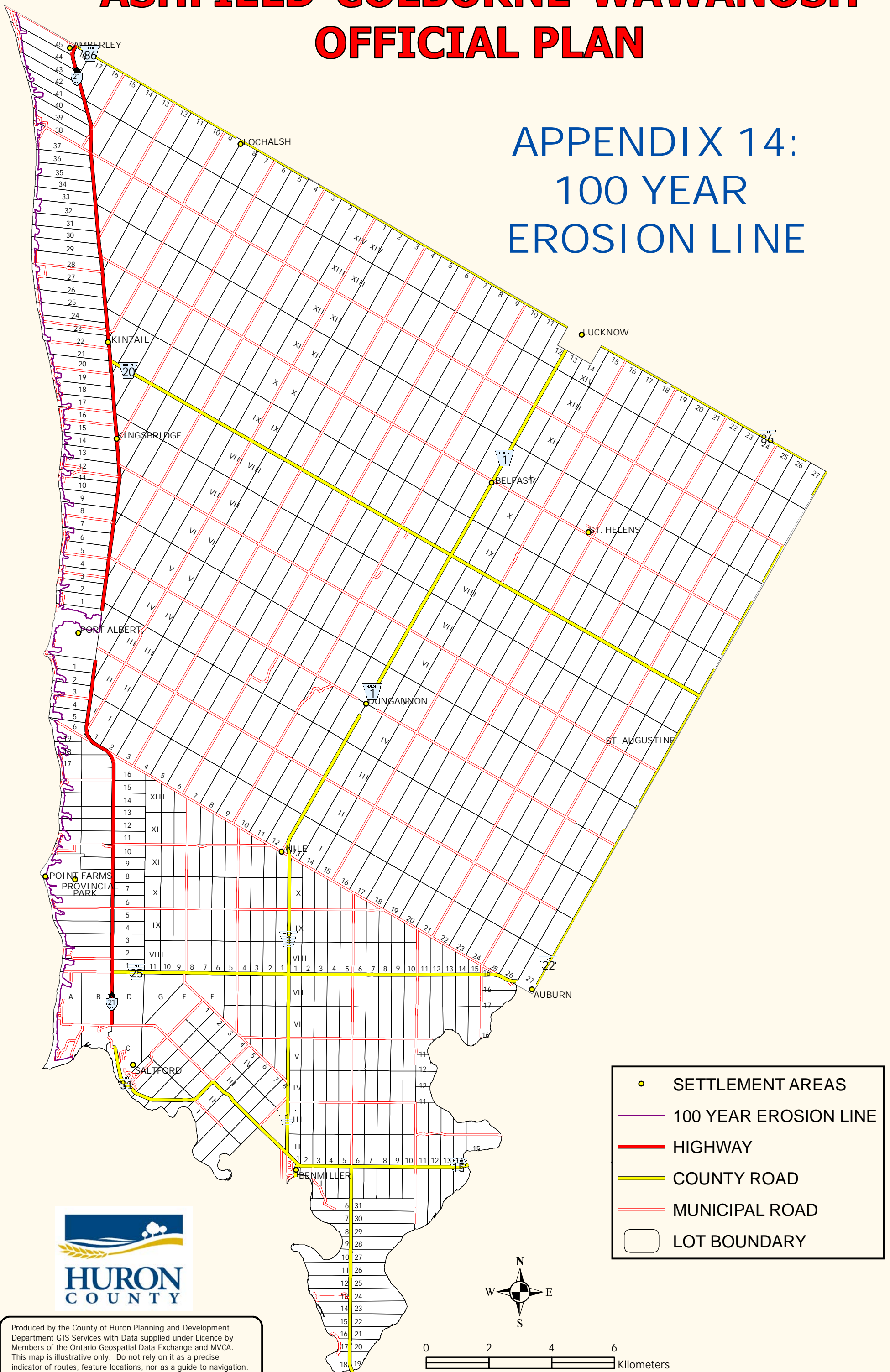
Med

High

APPENDIX 13: SIGNIFICANT GROUNDWATER RECHARGE AREAS



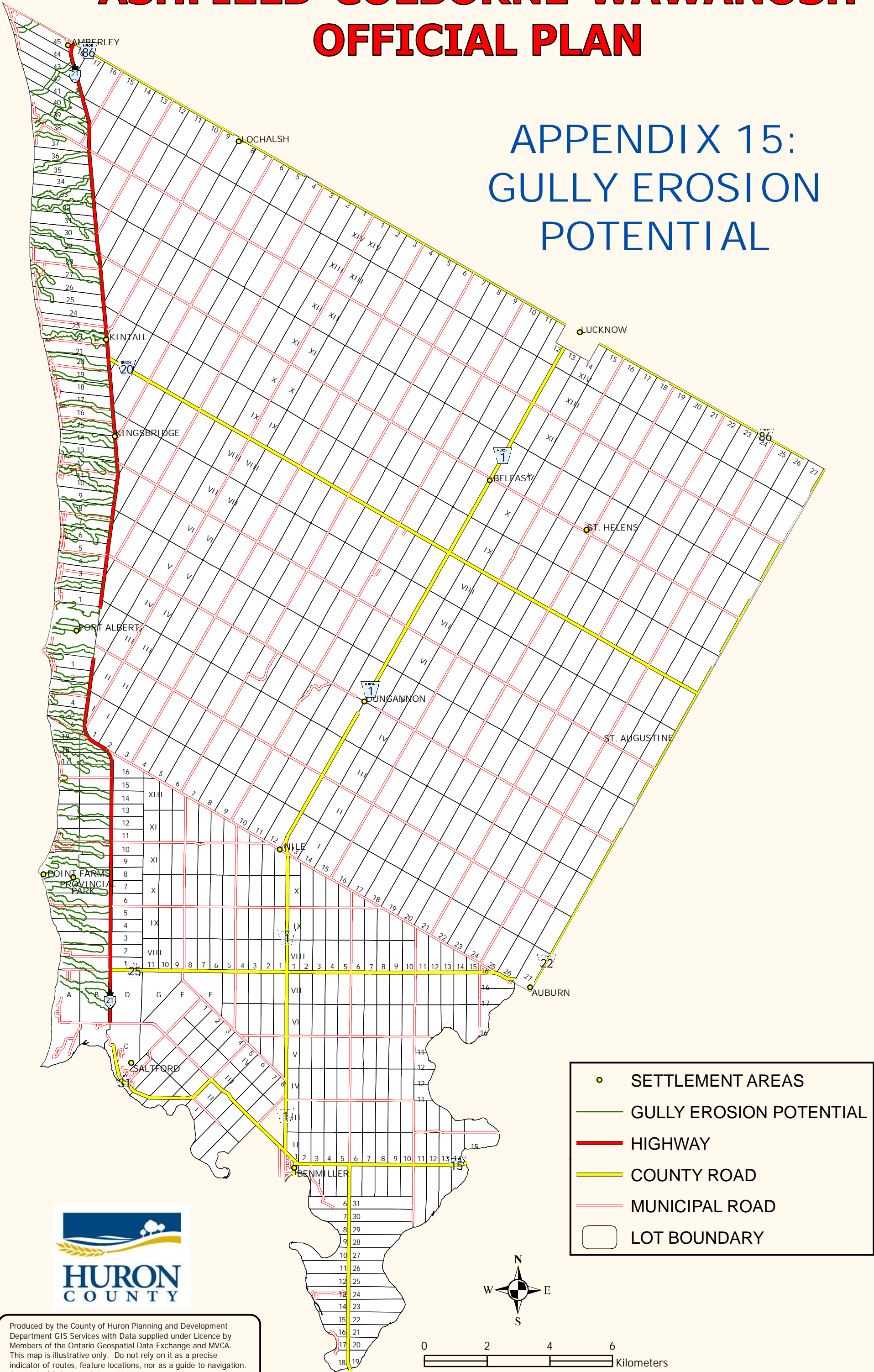
APPENDIX 14: 100 YEAR EROSION LINE



Produced by the County of Huron Planning and Development
Department GIS Services with Data supplied under Licence by
Members of the Ontario Geospatial Data Exchange and MVCA.
This map is illustrative only. Do not rely on it as a precise
indicator of routes, feature locations, nor as a guide to navigation.
Copyright (c) Queen's Printer 2003.
April 2003.

ASHFIELD-COLBORNE-WAWANOSH OFFICIAL PLAN

APPENDIX 15: GULLY EROSION POTENTIAL



Produced by the County of Huron Planning and Development Department GIS Services with Data supplied under Licence by Members of the Ontario Geospatial Data Exchange and MVCA. This map is illustrative only. Do not rely on it as a precise indicator of routes, feature locations, nor as a guide to navigation. Copyright (c) Queen's Printer 2003. April 2003.

1:110,000